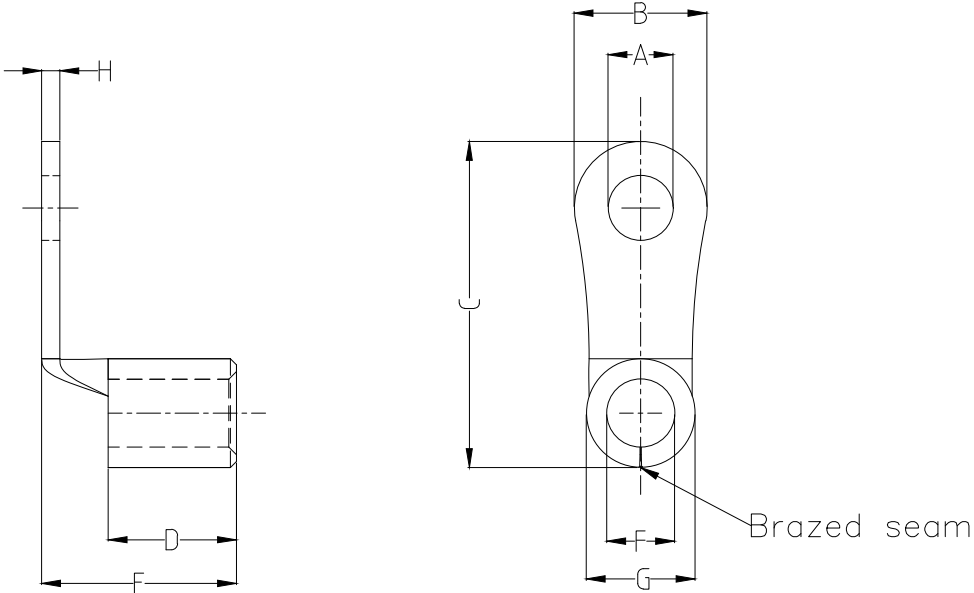


1 2 3 4 5 6 7 8

REV	LOCATIONS	DESCRIPTION	DATE	REVISER	APPD

Notes:

Material: Copper
 Plating: Matte tin plated
 Wire range: 6~10mm²/ (8 AWG)
 Applicable screw: #8 UNC
 Max current: 62A



PART NO.	Dimensions							
	A	B	C	D	E	F	G	H
FRT05-008000400B0N2	±0.3	±0.5	±1	±1	±1	±0.5	±0.5	±0.05
FRT05-008000400B0N2	4.3	8.0	21.6	8.5	11.7	4.5	7.2	1.2

<p>THIRD ANGLE PROJECTION</p>	GENERAL TOLERANCES (UNLESS SPECIFIED)		APPROVE BY	DATE	PART NO.	ITEM NO.	<p>Building Technology Cornerstone</p>	
	X. ±0.30	X.* ±5'	LEO	09/JAN/21	FRT05-008000400B0N2	FRT05		
	X.X ±0.20	X.X' ±2'	CHECKED BY	DATE	TITLE	REV 0		SHEET NO. 1/1
	X.XX ±0.15	X.XX' ±1'	GISELLE	09/JAN/21	Ring tongue terminal			
SCALE	SIZE	X.XXX ±0.10	X.XXX' ±0.5'	DRAWN BY	DATE	THIS DRAWING CONTAINS INFORMATION THAT IS PROPRIETARY TO TXGA INDUSTRIAL ELECTRONICS(S.Z)CO.,LTD AND SHOULD NOT BE USED WITHOUT WRITTEN PERMISSION		
5:1	A4			PYD	09/JAN/21			

1 2 3 4 5 6 7 8